

Rimikon

Leaders in Extra Low Voltage LED Lighting

2016 CATALOG



Make the switch to extra low voltage
12V and 24V DC LED lights





Fully Dimmable, Extra Low Voltage 24V DC 7.5W/11.5W, 4" Diameter LED Recessed Lights

Rimikon patented LED recessed lights (also known as LED downlights, pot lights or can lights) can be installed on ceilings, under arches, and even in high-moisture areas such as over bathtubs and above shower stalls. They are equally versatile for outdoor use, including under roof eaves to illuminate balconies, patios, landscape features, and water features.

Drawing just 7.5W-11.5W to put out 400-600 lumens, Rimikon's patented extra low voltage recessed lights will last up to 50,000 hours (17 years at 8 hours per day), consuming less energy and saving substantially more on energy costs than compact fluorescent lights (CFLs) and traditional, higher voltage LED lights.



\$72.00

RIM-209ww
(7.5W Rimikon LED recessed light, warm white)

RIM-209w
(7.5W Rimikon LED recessed light, white)



\$80.00

RIM-215ww
(11.5W Rimikon LED recessed light, warm white)

RIM-215w
(11.5W Rimikon LED recessed light, white)

SPECS AND DETAILS:

- Input Voltage: 24V DC
- Output: 24V DC
- Lumens: 400 (7.5W) or 600 (11.5W)
- Kelvins: 2,900 (warm white) or 3,200 (white)
- Rated power: 15-36V DC, 310mA (7.5W) or 18-36V DC, 490mA (11.5W)
- LED Count: 3 Cree LED (7.5W) or 5 Cree LED (11.5W)
- One 24V DC 4A power supply can power up to eight 7.5W or six 11.5W LED recessed lights
- Cutout hole should be 3-3/4” or 4”
- No metal back can required, (product is IC rated)
- Certified to be used with extra low voltage 14/2 stranded wire
- Trim color: white (optional brown or black)
- Certifications: UL/CUL (Class 2), and Energy Star
- Warranty: 5 years

RELATED PRODUCTS:

PLN-100-24RIM	24V DC power supply	\$82.00
RIM-IPC	single color controller	\$134.00
RIM-LVD2	Decora style dimmer	\$50.00
RIM-SW12/24	Decora style single and 3-way switch in one	\$28.00
RIM-EXT	extender to double load lights	\$64.00
RIM-TMAD	power supply terminal adapter connector	\$1.60
RIM-MOD	12V DC to 12V DC power distribution module	\$68.00
RIM-RF6.25	retrofit adapter ring for 5” can	\$30.00
RIM-RF7.5	retrofit adapter ring for 6” can	\$30.00
RIM-PL-RING-DB	trim faceplate (dark brown)	\$30.00
RIM-PL-RING-BL	trim faceplate (black)	\$30.00
RIM-FT4-W14/2	14 AWG, 2 conductor stranded wire (500ft roll)	\$245.00
RIM-FT4-W14/4	14 AWG, 4 conductor stranded wire (500ft roll)	\$395.00
RIM-IFP	faceplate	\$2.00
RIM-RI-BRK	4” rough-in bracket for recessed lights	\$10.00



Fully Dimmable, Extra Low Voltage 24V DC 11.5W, 4" Diameter LED Directional Recessed Lights

Create dramatic or dimmable effects with Rimikon LED directional recessed lights (also known as LED adjustable downlights or LED gimbal lights). Designed for ceilings (indoor use only) and for accent lighting exactly where you need it, they emit warm white or white color temperatures.

Drawing just 11.5W to put out 600 lumens, Rimikon's patented extra low voltage directional recessed lights consume less energy and save substantially more on energy costs than compact fluorescent lights (CFLs) and traditional, higher voltage LED lights. Replacement won't be necessary for up to 50,000 hours.



\$89.00

RIM-GPL15ww
(11.5W Rimikon LED recessed gimbal light, warm white)

RIM-GPL15w
(11.5W, Rimikon LED recessed gimbal light, white)

SPECS AND DETAILS:

- Input Voltage: 24V DC
- Output: 24V DC
- Lumens: 600
- Kelvins: 2,900 (warm white) or 3,200 (white)
- Rated power: 8-36V DC, 490mA
- LED Count: 5 Cree LED
- One 24V DC 4A power supply can power up six 11.5W LED directional recessed lights
- Cutout hole should be 3-3/4" or 4"
- No metal back can required, (product is IC rated)
- Certified to be used with extra low voltage 14/2 stranded wire
- Trim color: white
- Certifications: UL/CUL (Class 2), and Energy Star
- Warranty: 5 years

RELATED PRODUCTS:

PLN-100-24RIM	24V DC power supply	\$82.00
RIM-IPC	single color controller	\$134.00
RIM-LVD2	Decora style dimmer	\$50.00
RIM-SW12/24	Decora style single and 3-way switch in one	\$28.00
RIM-EXT	extender to double load lights	\$64.00
RIM-TMAD	power supply terminal adapter connector	\$1.60
RIM-MOD	12V DC to 12V DC power distribution module	\$68.00
RIM-RF6.25	retrofit adapter ring for 5" can	\$30.00
RIM-RF7.5	retrofit adapter ring for 6" can	\$30.00
RIM-PL-RING-DB	trim faceplate (dark brown)	\$30.00
RIM-PL-RING-BL	trim faceplate (black)	\$30.00
RIM-FT4-W14/2	14 AWG, 2 conductor stranded wire (500ft roll)	\$245.00
RIM-FT4-W14/4	14 AWG, 4 conductor stranded wire (500ft roll)	\$395.00
RIM-IFP	faceplate	\$2.00
RIM-RI-BRK	4" rough-in bracket for recessed lights	\$10.00



Fully Dimmable, Extra Low Voltage 24V DC 48W, 2'x2' LED Panel Lights

Rimikon 2'x2' LED panel lights are low energy, long lasting, recyclable, and safe to install in indoor T-bar (grid) and flush ceilings. Transform lobby and reception areas, meeting rooms, multi-purpose spaces, and high traffic walkways in office buildings and commercial towers. Improve and enhance lighting conditions in educational settings for optimized focus, vision, health, and wellbeing. Brighten, dim or apply accented LED lighting to showcase products, motivate sales, optimize energy savings, and enhance security at shopping destinations. Support the quality of care offered by healthcare and wellness facilities by providing durable, dependable lighting systems that are flicker free and fully dimmable.

Drawing just 45W to put out 4,400 lumens of warm white or natural white color temperature, Rimikon's patented extra low voltage panel lights can brighten or dim any room using wall mount or wireless dimming control.



\$179.⁰⁰

RIM-PANEL-26ww-DC
RIM-PANEL-26w-DC

SPECS AND DETAILS:

- Input Voltage: 24V DC
- Output: 24V DC
- Lumens: 4,400
- Kelvins: 2,700 (warm white) or 5,000 (natural white)
- Rated power: 45W
- LED Count: 264
- One 24V DC 4A power supply can power up to two LED panel lights
- Certified to be used with extra low voltage 14/2 stranded wire
- Certifications: UL/CUL (Class 2), DLC, and FCC
- Warranty: 5 years

RELATED PRODUCTS:

PLN-100-24RIM	24V DC power supply	\$82.00
RIM-IPC	single color controller	\$134.00
RIM-LVD2	Decora style dimmer	\$50.00
RIM-SW12/24	Decora style single and 3-way switch in one	\$28.00
RIM-TMAD	power supply terminal adapter connector	\$1.60
RIM-R26SM	surface mount frame	\$36.00
RIM-R26CSC	ceiling suspension cable kit	\$19.00
RIM-R26CM	chain mount bracket	\$2.25
RIM-R26TBC	spring clip	\$19.00
RIM-FT4-W14/2	14 AWG, 2 conductor stranded wire (500ft roll)	\$245.00
RIM-FT4-W14/4	14 AWG, 4 conductor stranded wire (500ft roll)	\$395.00



Fully Dimmable, 24V AC 45W, 2'x2' LED Panel Lights

When all you want is an energy efficient LED panel light with a standard power supply and wiring, Rimikon 2'x2' LED panel lights draw just 45W to put out 4,400 lumens of warm white or natural white color temperature. Whether it's an office building or commercial tower, a hospitality or shopping destination, an educational setting or a healthcare facility, Rimikon's panel lights can brighten or dim any room or space using wall mount or wireless dimming control.



\$243.00

RIM-PANEL-26ww-AC
RIM-PANEL-26w-AC

SPECS AND DETAILS:

- Input Voltage: 100V-347V AC
- Output: 24V DC
- Lumens: 4,400
- Kelvins: 2,700 (warm white) or 5,000 (natural white)
- Rated power: 45W
- LED Count: 263
- Requires a 100V-347V power supply
- Use with standard 14/3 solid copper wire
- Certifications: UL/CUL (Class 2), DLC, and FCC
- Warranty: 5 years

RELATED PRODUCTS:

RIM-R26SM	surface mount frame	\$36.00
RIM-R26CSC	ceiling suspension cable kit	\$19.00
RIM-R26CM	chain mount bracket	\$2.25
RIM-R26TBC	spring clip	\$19.00



Fully Dimmable, Extra Low Voltage 12V DC 2.5 W, 2 ¼” Diameter LED Cabinet Lights

Bring the modern elegance of Rimikon extra low voltage LED cabinet lights into your home. Installed under counters or cabinets, they cast a flicker free, warm white color temperature with fully adjustable brightness using wall mount or wireless dimming control. Trim colors include white, silver, black or brushed nickel. Under counter or under cabinet brackets are also available.

Rimikon LED cabinet lights are also ideal for providing accent lighting on collections or valuables inside china cabinets, hutches or curio cases. Each Rimikon extra low voltage LED cabinet light only draws 2.5W of power to put out 140 lumens, saving you substantial energy costs. When you install Rimikon extra low voltage cabinet lights, you won't need to worry about maintenance or replacements for up to 50,000 hours.



\$44.00

- RIM-CABD12w (white)**
- RIM-CABD12s (silver)**
- RIM-CABD12b (black)**
- RIM-CABD12bn (brushed nickel)**

SPECS AND DETAILS:

- Input Voltage: 12V DC
- Output: 12V DC
- Lumens: 140
- Kelvins: 2,900 (warm white)
- Rated power: 12V DC, 223mA, 2.5W
- LED Count: 1 Cree LED
- Requires a 12V DC power supply
- Powers up to 12 LED cabinet lights (on a 3A power supply) or 18 LED cabinet lights (on a 5A power supply)
- Certified to be used with 18/2 extra low voltage stranded wire
- Install in a recessed cutout of 2 ¼” or surface mounted with optional bracket
- Under counter or under cabinet brackets also available
- Certifications: UL/CUL (Class 2), and Energy Star
- Warranty: 1 year

RELATED PRODUCTS:

RIM-PW12.-3.0	12V DC 3A power supply	\$38.00
RIM-PW12.-5.0	12V DC 5A power supply	\$60.00
RIM-IPC	single color controller	\$134.00
RIM-LVD2	Decora style dimmer	\$50.00
RIM-SW12/24	Decora style single and 3-way switch in one	\$28.00
RIM-ROT-DIM	12V rotary dimmer	\$16.00
RIM-EXT	extender to double load lights	\$64.00
RIM-TMAD	power supply terminal adapter connector	\$1.60
RIM-MOD	12V DC to 12V DC power distribution module	\$68.00
RIM-CAB-BRK	counter or cabinet bracket	\$4.00
RIM-FT4-W18/2	18 AWG, 2 conductor stranded wire (1000ft roll)	\$180.00





Fully Dimmable, Extra Low Voltage 12V DC Flexible Indoor or Outdoor Single Color LED Strip Lights

Set the mood in any indoor or outdoor environment by installing fully dimmable Rimikon single color LED strip lights. Available in rolls of 16.4 feet, the thin profile of the LED strip lights combined with a flexible, self-adhesive backing makes them easy to install in homes, bars, restaurants, architectural or artistic display areas, balconies, patios, and near landscape or water features.

Rimikon LED strip lights emit beautiful warm white or white color temperatures. When you choose extra low voltage, you are getting low energy consumption and a healthy, safe and vibrant lighting solution for any lighting project.



\$48.00

RIM-STR1ww (indoor use, warm white)
RIM-STR1w (indoor use, white)



\$64.00

RIM-STR14ww (outdoor use, warm white)
RIM-STR14w (outdoor use, white)



SPECS AND DETAILS:

- Input Voltage: 12V DC
- Output: 12V DC
- Lumens: 1,800
- Kelvins: 2,900 (warm white) or 5,200 (natural white)
- Rated power: 1.5W/foot
- LED Type: 3528
- Requires a 12V DC power supply
- Powers up to 16.4 feet (1 roll) of LED strip lights (on a 3A power supply) or up to 32.8 feet (2 rolls) of LED strip lights (on a 5A power supply)
- Rolls can be cut into different segments (approximately every 2")
- LED strips can be installed as is or using an optional aluminum bracket
- Roll: 16.4 feet
- Certifications: UL/CUL (Class 2)

RELATED PRODUCTS:

RIM-PW12.-3.0	12V DC 3A power supply	\$38.00
RIM-PW12.-5.0	12V DC 5A power supply	\$60.00
RIM-IPC	single color controller	\$134.00
RIM-LVD2	Decora style dimmer	\$50.00
RIM-SW12/24	Decora style single and 3-way switch in one	\$28.00
RIM-ROT-DIM	12v rotary dimmer	\$16.00
RIM-EXT	extender to double load lights	\$64.00
RIM-STRNC1	6" single color LED single end connector	\$1.40
RIM-STRNC2	6" single color LED double end connector	\$1.60
RIM-STRNC3	single color LED strip coupler	\$1.00
RIM-STRCNL4	single color "L" shape LED corner connector	\$2.60
RIM-STRMB5	single color "U" shape LED mounting bracket	\$1.00

Optional aluminum profiles available



Fully Dimmable, Extra Low Voltage 12V DC Flexible Indoor or Outdoor RGB LED Strip Lights

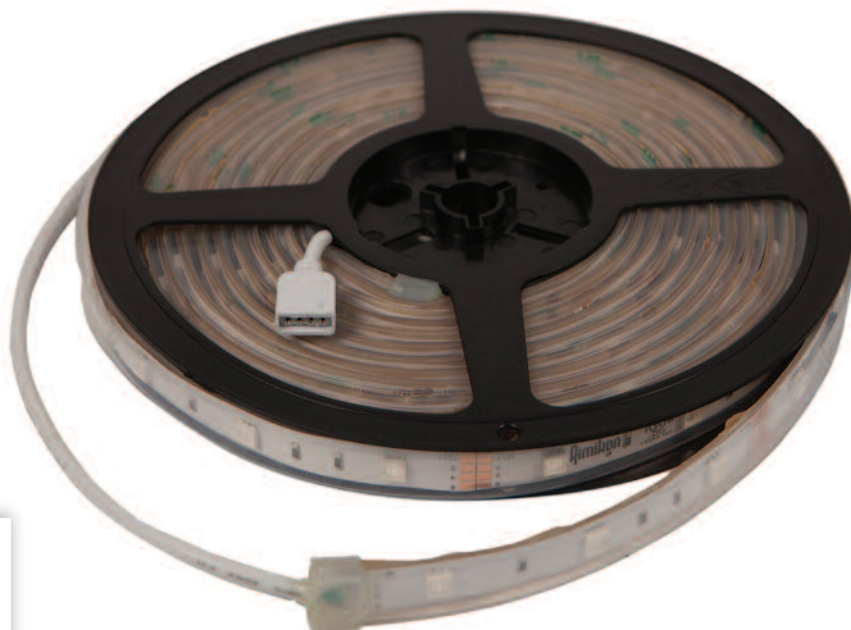
Get in the festive spirit by installing fully dimmable Rimikon RGB (red, green and blue) color LED strip lights in homes, bars, restaurants, architectural or artistic display areas, balconies, patios, and near landscape or water features. Available in rolls of 16.4 feet, the thin profile of the LED strip lights combined with a flexible, self-adhesive backing makes installation easy and fast.

When you choose extra low voltage, you are getting low energy consumption and a healthy, safe and vibrant lighting solution for any lighting project.



\$94.00

RIM-STR17-RGB
(indoor/indoor, red, green and blue colors)



SPECS AND DETAILS:

- Input Voltage: 12V DC
- Output: 12V DC
- Lumens: 1,800
- Kelvins: RGB
- Rated power: 36W (1.5W/foot)
- LED Type: 5050
- LED Quantity: 150/roll
- Roll: 16.4 feet
- Requires a 12V DC power supply
- Powers up to 16.4 feet (1 roll) of LED strip lights (on a 3A power supply) or up to 32.8 feet (2 rolls) of LED strip lights (on a 5A power supply)
- Rolls can be cut into different segments (approximately every 7.5")
- LED strips can be installed as is or using an optional aluminum bracket
- Certifications: UL/CUL (Class 2)

RELATED PRODUCTS:

RIM-PW12-.30	12V DC 3A power supply	\$38.00
RIM-PW12-.50	12V DC 5A power supply	\$60.00
RIM-SW12/24	Decora style single and 3-way switch in one	\$28.00
RIM-RGBIPC	RGB IP controller	\$134.00
RIM-RGBC	24-key infrared controller	\$40.00
RIM-ROT-DIM	12V rotary dimmer	\$16.00
RIM-EXT	extender to double load lights	\$64.00
RIM-RGBCN1	6" RGB LED single end connector	\$1.90
RIM-RGBCN2	6" RGB LED double end connector	\$2.20
RIM-RGBCN3	RGB LED strip coupler	\$1.20
RIM-RGBCNL4	RGB "L" shape LED corner connector	\$2.40
RIM-RGBMB5	RGB "U" shape LED mounting bracket	\$1.00
RIM-RGBCN6	4-pin RGB LED quick connect with slide-in male end	\$2.60

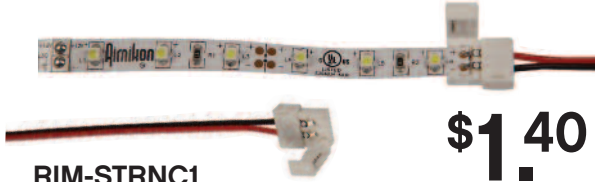
Optional aluminum profiles available



Connectors for LED Strip Lights

Easily and quickly connect your indoor or outdoor LED strip lights to any wire or power supply, (no soldering required). Parts include single end, double end, L shape and U shape connectors and strip coupler for single color application.

Single color application

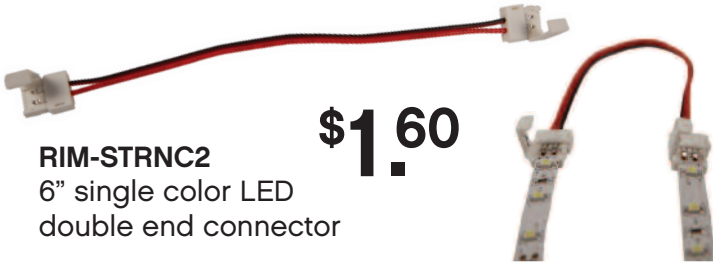


RIM-STRNC1
6" single color LED single end connector **\$1.40**

RGB color application



RIM-RGBCN1
6" RGB LED single end connector **\$1.90**



RIM-STRNC2
6" single color LED double end connector **\$1.60**



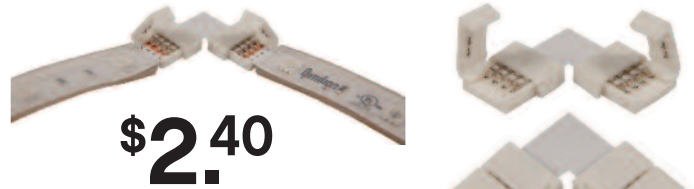
RIM-RGBCN2
6" RGB LED double end connector **\$2.20**



RIM-STRNC3
single color LED strip coupler **\$1.00**



RIM-RGBCN3
RGB LED strip coupler **\$1.20**



RIM-RGBCNL4
RGB "L" shape LED corner connector **\$2.40**



RIM-STRCNL4
single color "L" shape LED corner connector **\$2.60**



RIM-RGBMB5
RGB "U" shape LED mounting bracket **\$1.00**



RIM-STRMB5
single color "U" shape LED mounting bracket **\$1.00**



RIM-RGBCN6
4-pin RGB LED quick connect with slide-in male end **\$2.60**



Aluminum Profiles for LED Strip Lights

Rimikon aluminum profiles for LED strip light applications deliver light in a smooth and continuous way. Install them on walls, under cabinets, on stairs, etc. Most aluminum profiles offer clear, frosted or white plastic cover options.



\$68.00

RIM-AP2206
1/4"H x 7/16"W x 78.5"L



\$68.00

RIM-AP1506
1/4"H x 7/16"W x 78.5"L



\$92.00

RIM-AP1616B
5/8" H x 5/8" W x 78.5" L



\$92.00

RIM-AP1616
5/8"H x 5/8"W x 78.5"L



\$108.00

RIM-AP2406
1/4"H x 1"W x 78.5L



\$104.00

RIM-AP2310
3/8"H x 3/4"W x 78.5"L



\$122.00

RIM-AP3030
1-1/8"H x 1-1/8"W x 78.5"L



\$140.00

RIM-AP5528
bull nose x 2.5"W x 78.5"L

SPECS AND DETAILS:

- Length is 78.5"
- Comes with four surface mount clips and two end caps
- Additional end caps and mounting clips are sold separately in boxes of 10 each
- Use with Rimikon single color or RGB color strip lights (indoor or outdoor)



Fully Dimmable, Extra Low Voltage 24V DC 10W LED Flood Lights

Rimikon extra low voltage LED flood lights can be used to accent a wide range of architectural and outdoor landscape features. LED lighting is flicker free with full dimming control, allowing you to adjust the brightness at any time of day or night. Use to illuminate building facades, canopies, walkways, landscape features, water features, emergency pathways, parking lots, and building signage.

Drawing only 10W of power to put out 700 lumens of warm white color temperature, Rimikon extra low voltage LED flood lights will go on and stay on for up to 50,000 hours, saving you significantly more energy, operational, and maintenance costs than carbon fluorescent lights (CFLs) and traditional, higher voltage LED lights.



\$34.⁰⁰

RIM-FL24

SPECS AND DETAILS:

- Input Voltage: 24V DC
- Output: 24V DC
- Lumens: 700
- Kelvins: 3,000 (warm white)
- Rated power: 10W
- Requires a 24V DC 4A power supply
- Powers up to 6 LED flood lights
- Certified to be used with 14/2 extra low voltage stranded wire
- Certifications: UL/CUL (Class 2), IP65
- Warranty: 1 year

RELATED PRODUCTS:

PLN-100-24RIM	24V DC power supply	\$82.00
RIM-IPC	single color controller	\$134.00
RIM-SW12/24	Decora style single and 3-way switch in one	\$28.00
RIM-EXT	extender to double load lights	\$64.00
RIM-TMAD	power supply terminal adapter connector	\$1.60
RIM-MOD	12V DC to 12V DC power distribution module	\$68.00
RIM-FT4-W14/2	14 AWG, 2 conductor stranded wire (500ft roll)	\$245.00



Fully Dimmable, Extra Low Voltage 12V or 24V DC LED Stair/Wall Lights

Rimikon extra low voltage LED stair lights are versatile for use indoors or outdoors—whether you want illuminate the beautiful features of floating stairs, spiral staircases and grand stairways inside your home or create a safe outdoor pathway with beautifully accented stairs to showcase architectural, landscape and water features. Also known as wall lights, you can install them on posts, columns and walls—anywhere you want accent lighting.

Drawing only 3W of power to put out 175 lumens, Rimikon extra low voltage LED stair lights are fully dimmable and versatile for many commercial applications in bars, restaurants, and retail environments. Emits a warm white color temperature.



\$29.00

RIM-WL12/24



SPECS AND DETAILS:

- Input Voltage: 12V/24V DC
- Output: 12V/24V DC
- Lumens: 175
- Kelvins: 2,700 (warm white)
- Rated power: 3W
- Requires either a 12V (8A) or 24V (4A) DC power supply
- Powers up to 10 LED stair lights (on a 12V 3A power supply) or 18 LED stair lights (on a 12V 5A power supply)
- Powers up to 24 LED stair lights (on a 24V 4A power supply)
- Trim Color: Silver
- Certified to be used with 14/2 extra low voltage stranded wire
- Certifications: UL/CUL (Class 2), IP65
- Warranty: 1 year

RELATED PRODUCTS:

PLN-100-24RIM	24V DC power supply	\$82.00
RIM-PW12.-3.0	12V DC 3A power supply	\$38.00
RIM-PW12.-5.0	12V DC 5A power supply	\$60.00
RIM-IPC	single color controller	\$134.00
RIM-SW12/24	Decora style single and 3-way switch in one	\$28.00
RIM-EXT	extender to double load lights	\$64.00
RIM-TMAD	power supply terminal adapter connector	\$1.60
RIM-MOD	12V DC to 12V DC power distribution module	\$68.00
RIM-FT4-W14/2	14 AWG, 2 conductor stranded wire (500ft roll)	\$245.00



Extra Low Voltage 12V or 24V DC LED Power Supplies



\$82.00

PLN-100-24RIM
(24V DC power supply)

- Input Voltage: 100V-120V AC
- Output: 24V DC, 4A
- Surface mount
- Certifications: UL/CUL (Class 2)
- Warranty: 1 year



\$38.00

RIM-PW-12-3.0
(12V DC 3A power supply)

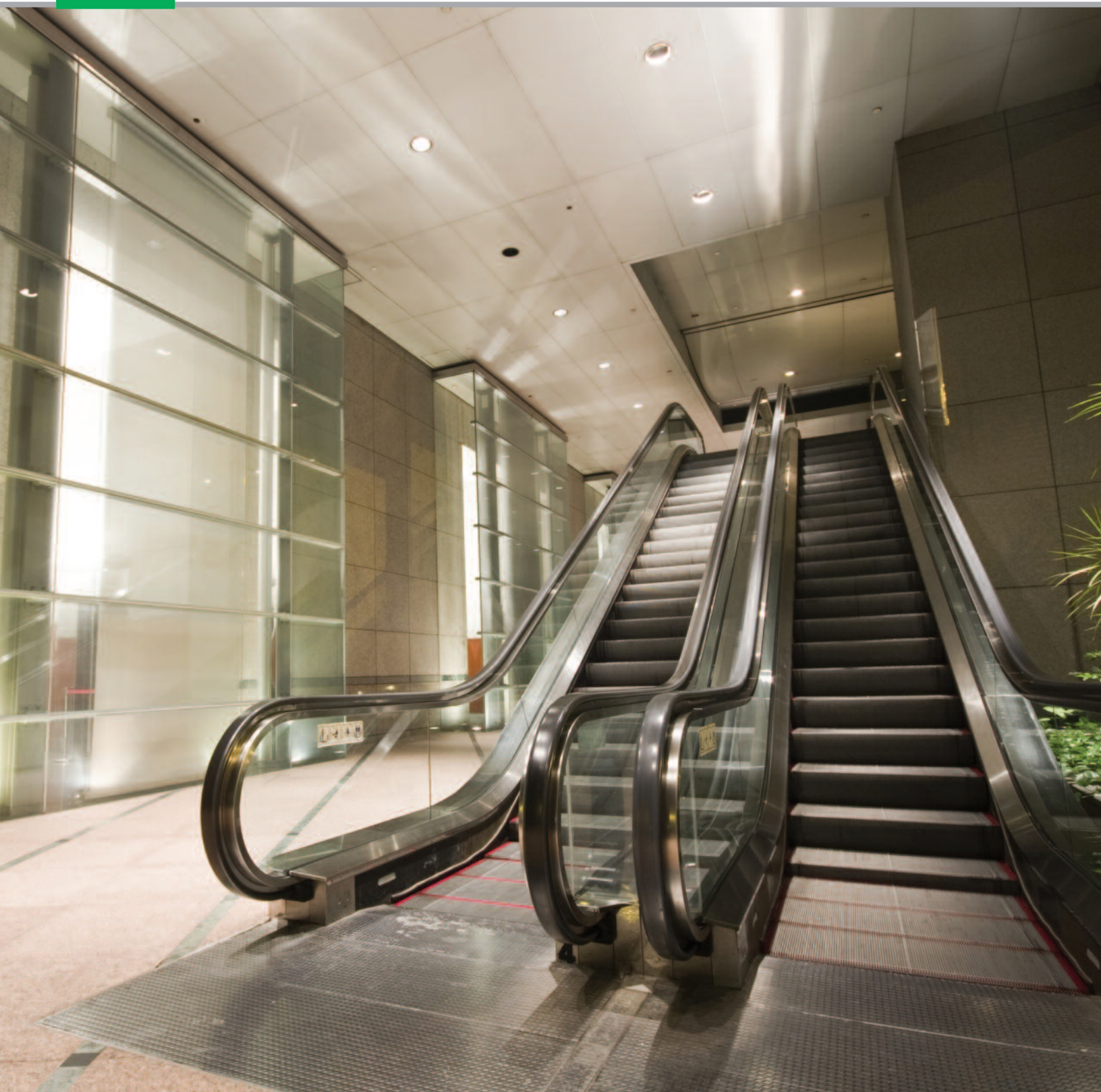
- Input Voltage: 100V-240V AC
- Output: 12V DC, 3A
- Plug in Type
- Certifications: UL/CUL (Class 2)
- Warranty: 1 year



\$60.00

RIM-PW-12-5.0
(12V DC 5A power supply)

- Input Voltage: 100V-240V AC
- Output: 12V DC, 5A
- Plug in Type
- Certifications: UL/CUL (Class 2)
- Warranty: 1 year



Extra Low Voltage LED Controls and Accessories

Extra Low Voltage LED Controls



\$134.00

RIM-IPC (12V or 24V single color IP controller)
RIM-RGBIPC (12V or 24V RGB color IP controller)

- Input Voltage: 12V-24V DC, 8A/4A
- Output: 12V-24V DC, 8A/4A
- Control single color LED lights by zone
- Download Rimikon iOS or Andoid app to control through network or WIFI
- Compatible with Control4, Crestron, Remote Technologies Incorporated (RTI) and Universal Remote Control (URC) home automation systems
- Certifications: UL/CUL (Class 2), FCC
- Warranty: 1 year



\$50.00

RIM-LVD2
 (12V or 24V DC
 Decora style dimmer)

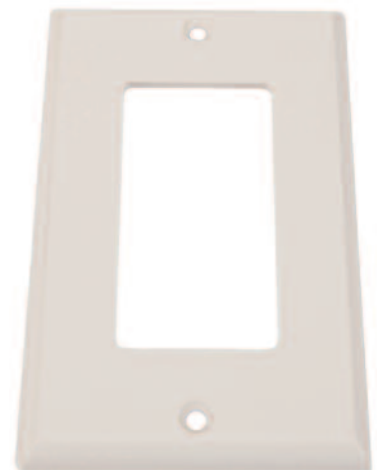
- Input Voltage: 12V/24V DC, 8A/4A max
- Output: 12V/24V DC, 8A/4A
- PWM (pulse width modulation)
- 1-Gang Decora style
- Wall mounted
- Requires 14 AWG, 2 conductor stranded wire
- Certifications: UL/CUL (Class 2)
- Warranty: 1 year



\$28.00

RIM-SW12/24
 (12V or 24V DC Decora style
 single and 3-way switch in one)

- Input Voltage: 12V/24V DC, 8A/4A max
- Output: 12V/24V DC, 8A/4A
- Use with 14 AWG, 2 conductor stranded wire
- Certifications: UL/CUL (Class 2)
- Warranty: 1 year



\$2.00

RIM-1FP
 (Decora style single
 gang faceplate)

- Color: White
- Compatible with Rimikon LVD2 dimmer or the RIM-SW12/24 LED light switch

Extra Low Voltage LED Controls



\$64.00

RIM-PHC24
(24V photo cell for dusk 'til dawn lighting)

- Input Voltage: 24V DC, 4A
- Output Voltage: 24V DC, 4A
- Recessed and single gang application
- Certifications: UL/CUL (Class 2)
- Warranty: 1 year



\$40.00

RIM-RGBC
(24-key infrared controller for RGB strip lights)

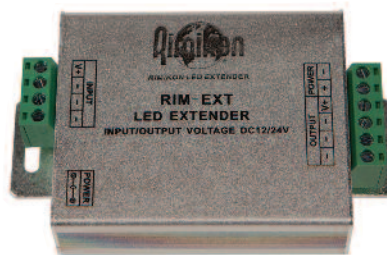
- Input Voltage: 12V DC, 8A
- Output: 12V DC, 8A
- Surface mount
- Warranty: 1 year



\$16.00

RIM-ROT-DIM
(12V rotary dimmer for cabinet and strip LED lights)

- Input Voltage: 12V DC, 5A/3A
- Output Voltage: 12V DC, 5A/3A
- Surface mount
- White or black
- Warranty: 1 year

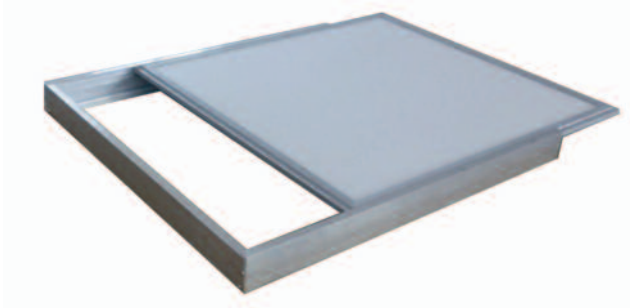


\$64.00

RIM-EXT
(extender to double load lights)

- Input Voltage: 100V to 12V/24V DC, 8A/4A
- Output: 12V/24V DC, 8A/4A
- Use with 12V DC or 24V DC power supplies
- Warranty: 1 year
- Note: It will not exceed Class 2 certification standards during installation

Extra Low Voltage Hanging LED Panel Accessories



\$36.00

RIM-R26SM
(surface mount frame)

- Slides inside the surface mount frame



\$19.00

RIM-R26CSC
(ceiling suspension kit)

- Hang flat panel with adjustable wires



\$19.00

RIM-R26TBC
(spring clip)

- 4-pack
- Attaches to the back of the panel
- Ideal for drywall ceilings



\$2.25

RIM-R26CM
(chain mount bracket)

- Secure the flat panel with chains or wire

Extra Low Voltage LED Accessories



\$30.00

RIM-RF7.5
(retrofit adapter ring for recessed lights, 7.5" outer diameter)

RIM-RF6.25
(retrofit adapter ring for recessed lights, 6.25" outer diameter)

- Available in white only



\$30.00

RIM-PL-RING-DB (dark brown)
RIM-PL-RING-BL (black)

- This is a special order if dark brown or black are preferred
- Same 4" trim as the standard white color trim on recessed lights
- Material: Aluminum
- Warranty: 1 year



\$4.00

RIM-CAB-BRK
(cabinet bracket)



\$15.00

RIM-RI-BRK
(rough-in bracket for recessed lights)



\$180.00

RIM-FT4-W18/2
(18 AWG, 2 conductor extra low voltage stranded wire, 1000ft roll)



\$245.00

RIM-FT4-W14/2
(14 AWG, 2 conductor extra low voltage stranded wire, 500ft roll)



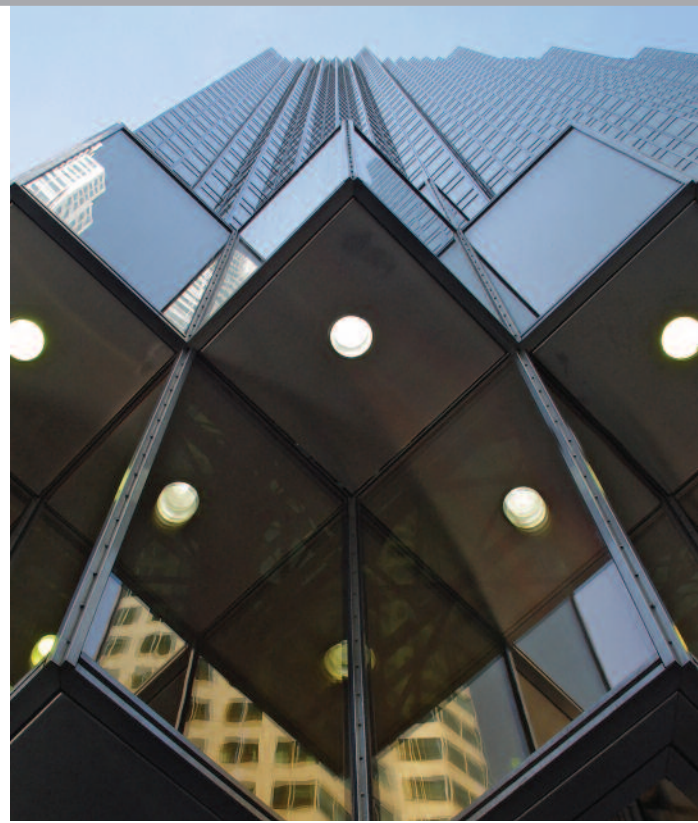
\$1.60

RIM-TMAD
(female 2.5mm LED power adapter jack)



DID YOU KNOW?

Compared to traditional compact fluorescent lights (CFLs), LEDs produce a higher light output per watt, consume less energy, and are used in more applications. They present no shock or burn risks, contain zero toxic mercury or UV radiation, and emit very little EMF pollution. Rimikon lights were designed to be even more efficient than traditional LED lights—up to 15% more efficient—and will last about five times longer than CFLs.



lights
ON



Rimikon is an innovative lighting and lighting design company that is passionate about integrating cost-saving, energy-efficient, and environmentally sustainable technologies and solutions into our everyday lives. It was first in line to introduce patent-protected ELV (extra low voltage) LED lighting products, power supplies, controls and accessories to the North American market.

For more technical information, please visit:

www.rimikon.com