



# Rimikon

LEADERS IN EXTRA LOW VOLTAGE LED LIGHTING

2017 CATALOG



Save on

Energy Maintenance Costs



Rimikon

# Rimikon

Leaders in Extra Low Voltage LED Lighting



## Table of Contents

Features and Benefits	4
LED Recessed Lights	6
LED Directional Lights	8
LED Panel Lights (DC)	10
LED Panel Lights (AC)	12
Plug-n-Play T8 LED Tubes	14
LED Cabinet Lights	16
LED Strip Lights (Single Color)	18
LED Strip Lights (RGB)	20
Connectors for LED Strip Lights	22
Aluminum Profiles for LED Strip Lights	24
LED Flood Lights	26
LED Stair/Wall Lights	28
LED Power Supplies	30
LED Controls and Accessories	31



# turn on

durable, modern elegance

- 50,000-hour life span
- Fully dimmable
- Warm white/white/RGB colors
- Compact fixtures
- Multiple trim colors

# catch on

LEDs outperform CFLs

- LEDs consume less energy than CFLs
- LEDs save more on energy costs
- LEDs last 5x longer than CFLs
- LEDs have more light output
- LEDs are used in more applications



Recessed light



Panel light



Directional recessed light



This home features Rimikon extra low voltage 24V DC LED recessed lights in warm white ([RIM-215ww](#)).

# save on

waste, energy and costs

- Installation cost savings
- Less energy use
- Lower energy costs
- More energy rebates
- Less frequent replacements

# count on

a safer, healthier environment

- Zero toxic mercury
- No shock or burn risks
- No UV radiation
- Minimal EMF pollution
- Recyclable materials



Strip lights



Cabinet lights



Flood light





Patented Rimikon extra low voltage LED lights are designed to significantly lower operational and maintenance costs. They are low energy, long lasting, 100% recyclable, and certified as safe to self-install.

## Fully Dimmable, Extra Low Voltage 24V DC 7.5W/12.5W, 4" Diameter LED Recessed Lights

**Applications/Product Description:** Rimikon patented LED recessed lights (also known as LED downlights, pot lights or can lights) can be installed on ceilings, under arches, and even in high-moisture areas such as over bathtubs and above shower stalls. They are equally versatile for outdoor use, including under roof eaves to illuminate balconies, patios, landscape features, and water features.

Drawing just 7.5W–12.5W to put out 535–850 lumens, Rimikon's patented extra low voltage recessed lights will last up to 50,000 hours (17 years at 8 hours per day), consuming less energy and saving substantially more on energy costs than compact fluorescent lights (CFLs) and traditional, higher voltage LED lights.

**RIM-209ww**

(7.5W Rimikon LED recessed light, warm white)

**RIM-209w**

(7.5W Rimikon LED recessed light, white)

**RIM-215ww**

(12.5W Rimikon LED recessed light, warm white)

**RIM-215w**

(12.5W Rimikon LED recessed light, white)

**SPECS AND DETAILS:**

- Input Voltage: 24V DC
- Output: 24V DC
- Lumens: 535 (7.5W) or 850 (12.5W)
- Kelvins: 2,900 (warm white) or 3,200 (white)
- Rated power: 15-36V DC, 310mA (7.5W) or 18-36V DC, 490mA (12.5W)
- LED Count: 3 Cree LED (7.5W) or 5 Cree LED (12.5W)
- CRI: 81
- One 24V DC 4A power supply can power up to eight 7.5W or six 12.5W LED recessed lights
- Cutout hole should be 3-3/4" or 4"
- No metal back box required, (product is IC rated)
- Certified to be used with extra low voltage 14/2 stranded wire
- Trim color: white (optional brown or black)
- Certifications: UL/CUL (Class 2), and Energy Star
- Warranty: 5 years

**APPLICATIONS:** see page 4**RELATED PRODUCTS:**

PLN-100-24RIM	24V DC power supply
RIM-IPC	single color controller
RIM-LVD2	Decora style dimmer
RIM-SW12/24	Decora style single and 3-way switch in one
RIM-EXT	extender to double load lights
RIM-TMAD	power supply terminal adapter connector
RIM-MOD	12V DC to 12V DC power distribution module
RIM-RF6.25	retrofit adapter ring for 5" can
RIM-RF7.5	retrofit adapter ring for 6" can
RIM-PL-RING-DB	trim faceplate (dark brown)
RIM-PL-RING-BL	trim faceplate (black)
RIM-FT4-W14/2	14 AWG, 2 conductor stranded wire (500 ft roll)
RIM-FT4-W14/4	14 AWG, 4 conductor stranded wire (500 ft roll)
RIM-IFP	faceplate
RIM-RI-BRK	4" rough-in bracket for recessed lights





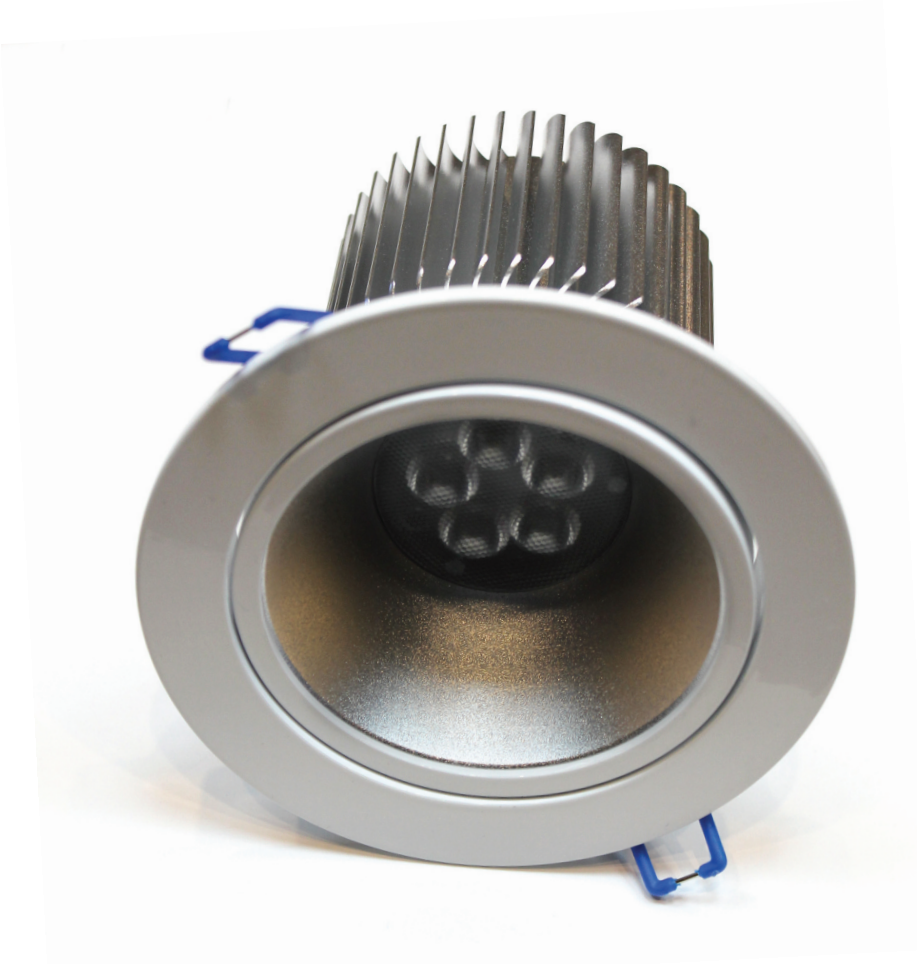
When building new homes, it makes dollars and sense to make the switch to extra low voltage LED lights. Ready to start saving on your energy bills?

## Fully Dimmable, Extra Low Voltage 24V DC 12.5W, 4" Diameter LED Directional Lights

**Applications/Product Description:** Create dramatic or dimmable effects with Rimikon LED directional lights (also known as LED adjustable downlights or LED gimbal lights). Designed for ceilings (indoor use only), Rimikon LED directional lights can be pointed in any direction—wherever you need warm white or white ambient, accent or task lighting. They can be installed as recessed lights or as track lighting.

Drawing just 12.5W to put out 850 lumens, Rimikon's patented extra low voltage directional recessed lights consume less energy and save substantially more on energy costs than compact fluorescent lights (CFLs) and traditional, higher voltage LED lights. Replacement won't be necessary for up to 50,000 hours.





#### SPECS AND DETAILS:

- Input Voltage: 24V DC
- Output: 24V DC
- Lumens: 850
- Kelvins: 2,900 (warm white) or 3,200 (white)
- Rated power: 8-36V DC, 490mA
- LED Count: 5 Cree LED
- CRI: 81
- One 24V DC 4A power supply can power up six 12.5W LED directional lights
- Can be installed as recessed lights or as track lighting
- Cutout hole should be 3-3/4" or 4"
- No metal back box required, (product is IC rated)
- Certified to be used with extra low voltage 14/2 stranded wire
- Trim color: white
- Certifications: UL/CUL (Class 2), and Energy Star
- Warranty: 5 years

#### RIM-GPL15ww

(12.5W Rimikon LED directional light, warm white)

#### RIM-GPL15w

(12.5W, Rimikon LED directional light, white)

**APPLICATIONS:** see page 5

#### RELATED PRODUCTS:

PLN-100-24RIM	24V DC power supply
RIM-IPC	single color controller
RIM-LVD2	Decora style dimmer
RIM-SW12/24	Decora style single and 3-way switch in one
RIM-EXT	extender to double load lights
RIM-TMAD	power supply terminal adapter connector
RIM-MOD	12V DC to 12V DC power distribution module
RIM-RF6.25	retrofit adapter ring for 5" can
RIM-RF7.5	retrofit adapter ring for 6" can
RIM-PL-RING-DB	trim faceplate (dark brown)
RIM-PL-RING-BL	trim faceplate (black)
RIM-FT4-W14/2	14 AWG, 2 conductor stranded wire (500 ft roll)
RIM-FT4-W14/4	14 AWG, 4 conductor stranded wire (500 ft roll)
RIM-IFP	faceplate
RIM-RI-BRK	4" rough-in bracket for recessed lights





Saint Paul University installed 2' x 2' (0.6 m<sup>2</sup>) LED panel lights in several of its classrooms. Feedback from students and staff reported not only a more natural quality of light, but the dimmable, flicker free features caused less eye strain and fewer headaches. The energy savings were so quickly realized that Saint Paul University will keep using Rimikon products during its next phase of renovations.

## Fully Dimmable, Extra Low Voltage 24V DC 45W, 2' x 2' LED Panel Lights

**Applications/Product Description:** Rimikon 2' x 2' LED panel lights are low energy, long lasting, recyclable, and safe to install in indoor T-bar (grid) and flush ceilings. Transform lobby and reception areas, meeting rooms, multi-purpose spaces, and high traffic walkways in office buildings and commercial towers. Improve and enhance lighting conditions in educational settings for optimized focus, vision, health, and wellbeing. Brighten, dim or apply accented LED lighting to showcase products, motivate sales, optimize energy savings, and enhance security at shopping destinations. Support the quality of care offered by healthcare and wellness facilities by providing durable, dependable lighting systems that are flicker free and fully dimmable.

Drawing just 45W to put out 4,400 lumens of warm white or natural white color temperature, Rimikon's patented extra low voltage panel lights can brighten or dim any room using wall mount or wireless dimming control.



**RIM-PANEL-26-DC-4K**

**RIM-PANEL-26-DC-5K**

#### SPECS AND DETAILS:

- Input Voltage: 24V DC
- Output: 24V DC
- Lumens: 4,400
- Kelvins: 4,000 (natural white light) or 5,000 (daylight)
- Rated power: 45W
- LED Count: 264
- One 24V DC 4A power supply can power up to two LED panel lights
- Certified to be used with extra low voltage 14/2 stranded wire
- Certifications: UL/CUL (Class 2), DLC, and FCC
- Warranty: 5 years

**APPLICATIONS:** see page 8

#### RELATED PRODUCTS:

PLN-100-24RIM	24V DC power supply
RIM-IPC	single color controller
RIM-LVD2	Decora style dimmer
RIM-SW12/24	Decora style single and 3-way switch in one
RIM-TMAD	power supply terminal adapter connector
RIM-R26SM	surface mount frame
RIM-R26CSC	ceiling suspension cable kit
RIM-R26CM	chain mount bracket
RIM-R26TBC	spring clip
RIM-FT4-W14/2	14 AWG, 2 conductor stranded wire (500 ft roll)
RIM-FT4-W14/4	14 AWG, 4 conductor stranded wire (500 ft roll)





## Fully Dimmable, 40W, 1' x 4', 2' x 2' and 2' x 4' LED AC Panel Lights

**Applications/Product Description:** When all you want is an energy efficient LED panel light with a standard power supply and wiring, Rimikon 1' x 4', 2' x 2' and 2' x 4' LED panel lights draw just 40W to put out 4,400 lumens of warm white, natural white or daylight color temperature. The panel is fully dimmable and lasts up to 50,000 hours.

Whether it's an office building or commercial tower, a hospitality or shopping destination, an educational setting or a healthcare facility, Rimikon's panel lights can brighten or dim any room or space using wall mount or wireless dimming control. Make the switch to LED and start saving energy, maintenance and costs.



Fully Dimmable, 40W, 1' x 4', 2' x 2' and 2' x 4' LED AC Panel Lights

Rimikon



RIM-P22S-40W 3K-120V  
 RIM-P22S-40W 3K-347V  
 RIM-P14S-40W 3K-120V  
 RIM-P24S-40W 3K-120V  
 RIM-P24S-40W 3K-347V

(Also available in 4K and 5K temperatures)



These panels are also available in other sizes, voltage ranges, and color temperatures: 1' x 4' (3K, 4K, 5K) and 2' x 4' (3K, 4K, 5K)



#### SPECS AND DETAILS:

- Input Voltage: 100V-347V AC
- Lumens: 4,400
- Kelvins: 3,000 (warm white), 4,000 (natural white) or 5,000 (daylight)
- Rated power: 40W
- LED Count: 263
- Requires a 100V-347V power supply
- Use with standard 14/3 solid copper wire
- Certifications: UL/CUL, DLC, and FCC
- Warranty: 5 years

**APPLICATIONS:** see page 11

#### RELATED PRODUCTS:

RIM-R26SM	surface mount frame
RIM-R26CSC	ceiling suspension cable kit
RIM-R26CM	chain mount bracket
RIM-R26TBC	spring clip

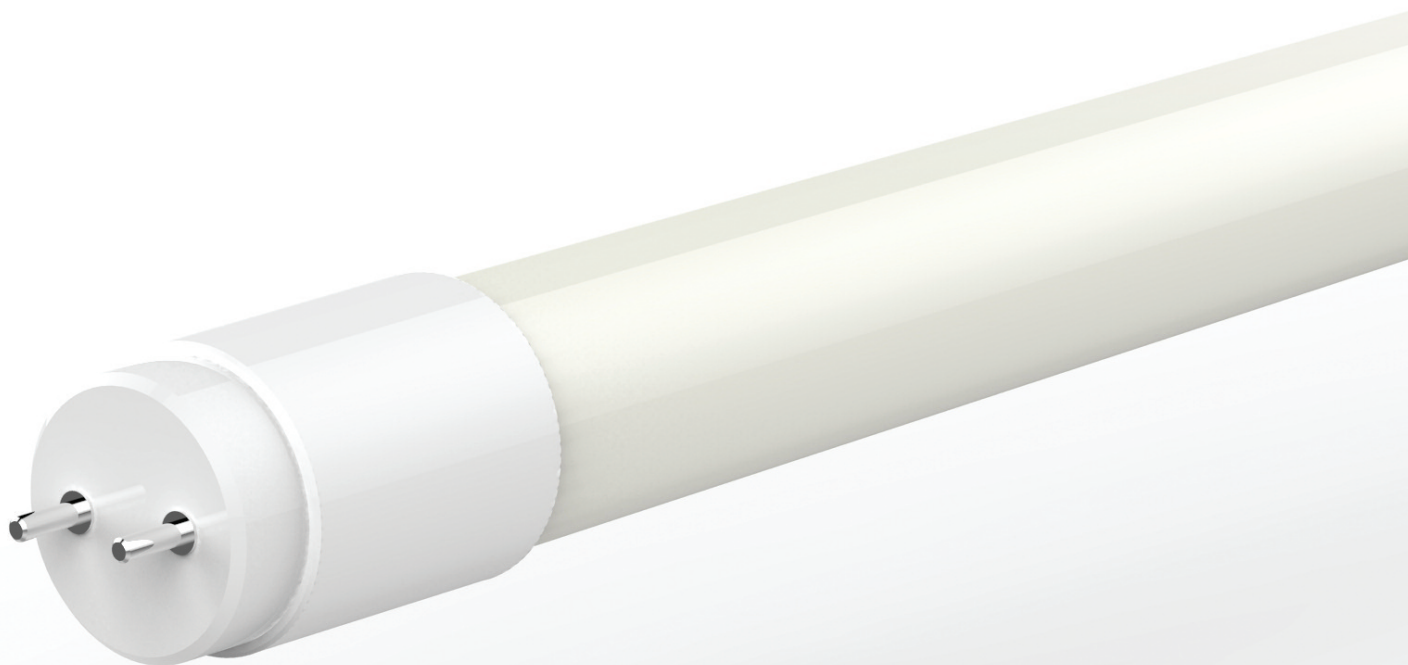




## Dimmable High Performance Type A Plug-n-Play T8 LED Tubes

**Applications/Product Description:** Get ready to make the switch from fluorescent tubes to dimmable, high performance Rimikon LED tubes. Available in lengths of 2, 4 or 8 feet and powered by as little as 8 to 15 watts, Rimikon glass tubes are compatible with about 95% of electronic ballasts on the market today. Additionally, glass tubes will not discolour, bend, or crack over time and are less prone to overheating.

Rimikon LED tubes are well-suited for commercial applications, particularly in office buildings. Not only will they reduce your energy consumption and costs, they will last up to 50,000 hours and come with either a 5 year warranty or a 10 year extended warranty. An optional shatter shield is available for increased durability.



#### SPECS AND DETAILS:

- Input Voltage: 110-347V
- Lumens: 1,150-2,200
- Kelvins: 3,000 to 6,500
- Dimmable: Yes
- Base: G13
- CRI: > 80
- Operating Temperature: -20°C to 40°C
- Certifications: CUL, UL, DLC4.1
- Average Rated Life: 50,000 hours
- Warranty: 5 years
- Extended Warranty: 10 years

#### MODELS:

- RIM-T8A2-1200lm-8w-3k (2' Tube)
- RIM-T8A2-1250lm-8w-4K, 5K (2' Tube)
- RIM-T8A4-1700lm-11.5w-3K (4' Tube)
- RIM-T8A4-1800lm-11.5w-4K, 5K (4' Tube)
- RIM-T8A4-2100lm-15w-3K, 4K (4' Tube)
- RIM-T8A4-2200lm-15w-4K, 5K (4' Tube)
- RIM-T8A4-SP-1800lm-11.5w-4K, 5K (4' Shatter Proof Tube)
- RIM-T8A4-SP-2200lm-15w-4K, 5K (4' Shatter Proof Tube)
- RIM-T8A8-4400lm-33w-4k, 5K (8' Tube)
- RIM-T8A3-1450lm-10.5w-4K (3' Tube)





Rimikon lights have been installed in Tamarack Homes since 2010. The Construction Manager at [Tamarack Developments](#), says, "Innovations like Rimikon extra low voltage LED lights are helping us reduce our carbon footprint in safe, affordable, and stylish ways."

## Fully Dimmable, Extra Low Voltage 12V DC 2.5W, 2-3/4" Outer Diameter LED Cabinet Lights

**Applications/Product Description:** Bring the modern elegance of Rimikon extra low voltage LED cabinet lights into your home. Installed under counters or cabinets, they cast a flicker free, warm white color temperature with fully adjustable brightness using wall mount or wireless dimming control. Trim colors include white, silver, black or brushed nickel. Under counter or under cabinet brackets are also available.

Rimikon LED cabinet lights are also ideal for providing accent lighting on collections or valuables inside china cabinets, hutches or curio cases. Each Rimikon extra low voltage LED cabinet light only draws 2.5W of power to put out 140 lumens, saving you substantial energy costs. When you install Rimikon extra low voltage cabinet lights, you won't need to worry about maintenance or replacements for up to 50,000 hours.





#### SPECS AND DETAILS:

- Input Voltage: 12V DC
- Output: 12V DC
- Lumens: 140
- Kelvins: 2,900 (warm white)
- Rated power: 12V DC, 223mA, 2.5W
- LED Count: 1 Cree LED
- Requires a 12V DC power supply
- Powers up to 12 LED cabinet lights (on a 3A power supply) or 18 LED cabinet lights (on a 5A power supply)
- Certified to be used with 18/2 extra low voltage stranded wire
- Dimensions: 2-3/4" x 7/16"
- Install in a recessed cutout of 2-1/4" or surface mounted with optional bracket
- Bezel size: 1/2"
- Under counter or under cabinet brackets also available
- Certifications: UL/CUL (Class 2), and Energy Star
- Warranty: 1 year

**RIM-CABD12w (white)**

**RIM-CABD12s (silver)**

**RIM-CABD12b (black)**

**RIM-CABD12bn (brushed nickel)**



**APPLICATIONS:** see page 12

#### RELATED PRODUCTS:

RIM-PW12-.3.0	12V DC 3A power supply
RIM-PW12-.5.0	12V DC 5A power supply
RIM-IPC	single color controller
RIM-LVD2	Decora style dimmer
RIM-SW12/24	Decora style single and 3-way switch in one
RIM-ROT-DIM	12V rotary dimmer
RIM-EXT	extender to double load lights
RIM-TMAD	power supply terminal adapter connector
RIM-MOD	12V DC to 12V DC power distribution module
RIM-CAB-BRK	counter or cabinet bracket
RIM-FT4-W18/2	18 AWG, 2 conductor stranded wire (1,000 ft roll)



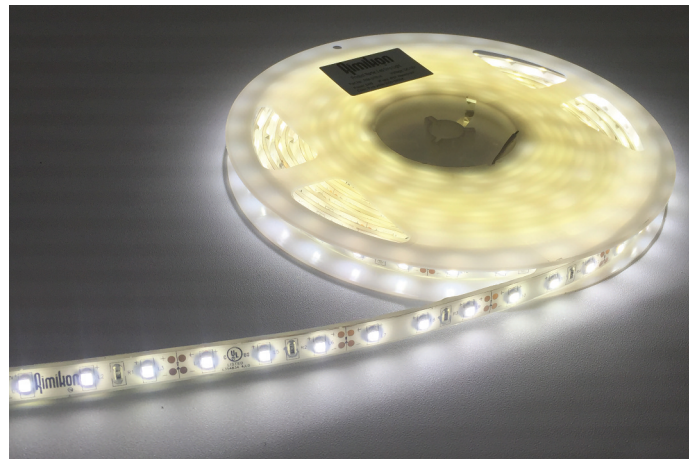


Rimikon extra low voltage LED strip lights can be installed directly on a clean, smooth surface or in an optional aluminum bracket. Our 16.4 ft rolls are flexible, self-adhesive, and can be cut into different segments (approximately every 2").

## Fully Dimmable, Extra Low Voltage 12V DC Flexible Indoor or Outdoor Single Color LED Strip Lights

**Applications/Product Description:** Set the mood in any indoor or outdoor environment by installing fully dimmable Rimikon single color LED strip lights. Available in rolls of 16.4 ft, the thin profile of the LED strip lights combined with a flexible, self-adhesive backing makes them easy to install in homes, bars, restaurants, architectural or artistic display areas, balconies, patios, and near landscape or water features. Get creative and apply to toe kicks, above cabinets, in elevators, on stairs, around mirrors, in closets, and in conjunction with crown molding.

Rimikon LED strip lights emit beautiful warm white or white color temperatures. When you choose extra low voltage, you are getting low energy consumption and a healthy, safe and vibrant lighting solution for any lighting project.



**RIM-STR1ww** (indoor use, warm white)

**RIM-STR1w** (indoor use, white)



**RIM-STR14ww** (outdoor use, warm white)

**RIM-STR14w** (outdoor use, white)



#### SPECS AND DETAILS:

- Input Voltage: 12V DC
- Output: 12V DC
- Lumens: 1,800
- Kelvins: 2,900 (warm white) or 5,200 (natural white)
- Rated power: 1.5W/ft
- LED Type: 3528
- Requires a 12V DC power supply
- Powers up to 16.4 ft (1 roll) of LED strip lights (on a 3A power supply) or up to 32.8 ft (2 rolls) of LED strip lights (on a 5A power supply)
- Rolls can be cut into different segments (approximately every 2")
- LED strips can be installed as is or using an optional aluminum bracket
- Roll: 16.4 ft
- Certifications: UL/CUL (Class 2)

**APPLICATIONS:** see page 14

#### RELATED PRODUCTS:

RIM-PW12.-3.0	12V DC 3A power supply
RIM-PW12.-5.0	12V DC 5A power supply
RIM-IPC	single color controller
RIM-LVD2	Decora style dimmer
RIM-SW12/24	Decora style single and 3-way switch in one
RIM-ROT-DIM	12V rotary dimmer
RIM-EXT	extender to double load lights
RIM-STRNC1	6" single color LED single end connector
RIM-STRNC2	6" single color LED double end connector
RIM-STRNC3	single color LED strip coupler
RIM-STRCNL4	single color "L" shape LED corner connector
RIM-STRMB5	single color "U" shape LED mounting bracket

Optional aluminum profiles available





Did you know that RGB LED lights are being purchased by more and more municipalities, businesses and homeowners to decorate indoor and outdoor Christmas trees and holiday event venues?

## Fully Dimmable, Extra Low Voltage 12V DC Flexible Indoor or Outdoor RGB LED Strip Lights

**Applications/Product Description:** Get in the festive spirit by installing fully dimmable Rimikon RGB (red, green and blue) color LED strip lights in homes, bars, restaurants, shopping destinations, offices, architectural or artistic display areas, balconies, patios, and entranceways. Decorate trees, landscape features and party venues.

What distinguishes Rimikon RGB strip lights is that once you download the Rimikon Android or Apple iOs app, you can control color changes manually or automatically, set a timer, set the lights to music, make the lights voice activated, or feature a particular color. Available in rolls of 16.4 ft, the thin profile of the LED strip lights combined with a flexible, self-adhesive backing makes installation easy and fast.



**RIM-STR17-RGB**  
(indoor/outdoor, red, green and blue colors)

#### SPECS AND DETAILS:

- Input Voltage: 12V DC
- Output: 12V DC
- Lumens: 1,800
- Kelvins: RGB
- Rated power: 36W (1.5W/foot)
- LED Type: 5050
- LED Quantity: 150/roll
- Roll: 16.4 ft
- Requires a 12V DC power supply
- Powers up to 16.4 ft (1 roll) of LED strip lights (on a 3A power supply) or up to 32.8 ft (2 rolls) of LED strip lights (on a 5A power supply)
- Rolls can be cut into different segments (approximately every 7.5")
- LED strips can be installed as is or using an optional aluminum bracket
- Certifications: UL/CUL (Class 2)

**APPLICATIONS:** see page 16

#### RELATED PRODUCTS:

RIM-PW12.-3.0	12V DC 3A power supply
RIM-PW12.-5.0	12V DC 5A power supply
RIM-SW12/24	Decora style single and 3-way switch in one
RIM-RGBIPC	RGB IP controller
RIM-RGBC	24-key infrared controller
RIM-ROT-DIM	12V rotary dimmer
RIM-EXT	extender to double load lights
RIM-RGBCN1	6" RGB LED single end connector
RIM-RGBCN2	6" RGB LED double end connector
RIM-RGBCN3	RGB LED strip coupler
RIM-RGBCNL4	RGB "L" shape LED corner connector
RIM-RGBMB5	RGB "U" shape LED mounting bracket
RIM-RGBCN6	4-pin RGB LED quick connect with slide-in male end

Optional aluminum profiles available





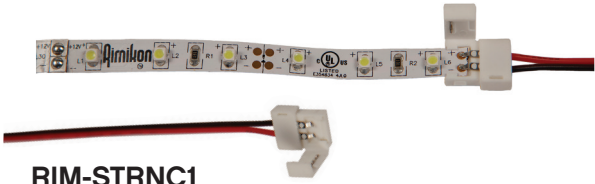
LED lighting conversions for your home are not only safe and easy to do yourself but will also save you energy and replacement costs for years to come. LED lights are earth friendly, low energy, and long lasting.

## Connectors for LED Strip Lights

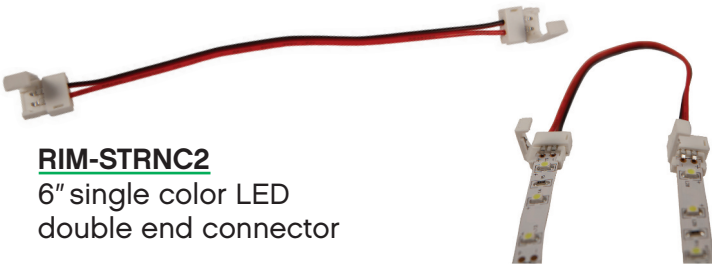
**Applications/Product Description:** Easily and quickly connect your indoor or outdoor LED strip lights to any wire or power supply (no soldering required). Parts include single end, double end, L shape and U shape connectors and a strip coupler for single color or RGB (red, green, blue color) application.



**Single color application**



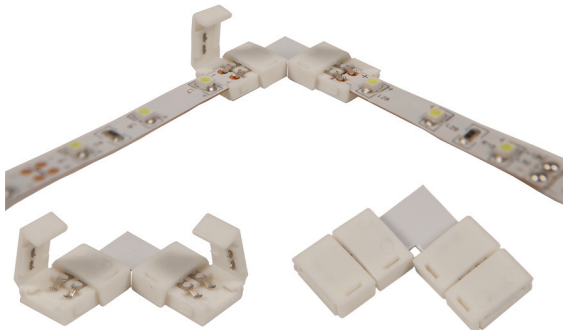
**RIM-STRNC1**  
6" single color LED single end connector



**RIM-STRNC2**  
6" single color LED double end connector



**RIM-STRNC3**  
single color LED strip coupler



**RIM-STRCNL4**  
single color "L" shape LED corner connector



**RIM-STRMB5**  
single color "U" shape LED mounting bracket

**RGB color application**



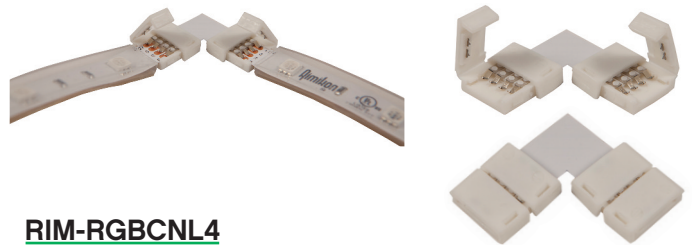
**RIM-RGBCN1**  
6" RGB LED single end connector



**RIM-RGBCN2**  
6" RGB LED double end connector



**RIM-RGBCN3**  
RGB LED strip coupler



**RIM-RGBCNL4**  
RGB "L" shape LED corner connector



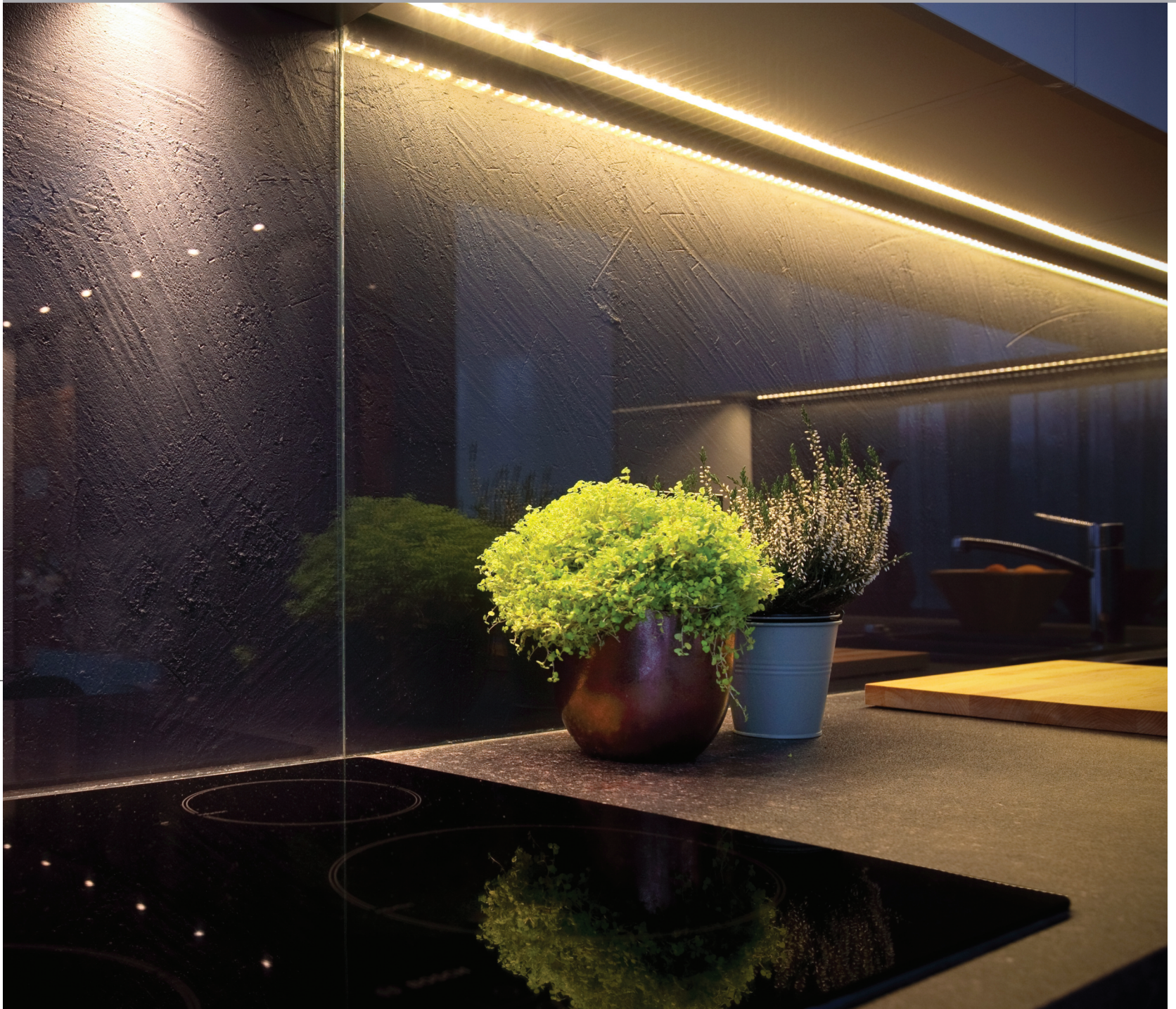
**RIM-RGBMB5**  
RGB "U" shape LED mounting bracket



**RIM-RGBCN6**  
4-pin RGB LED quick connect with slide-in male end

**APPLICATIONS:** see page 18





Rimikon products have the same esthetic look as other brands. What distinguishes us is that we design and test our own products in Ottawa, and we are consistently following through with top quality, competitive pricing, and availability.

## Aluminum Profiles for LED Strip Lights

**Applications/Product Description:** Rimikon aluminum profiles (also known as aluminum extrusions) for LED strip light applications deliver light in a smooth and continuous way. Install them on walls, under cabinets, on stairs, etc. Most aluminum profiles offer clear, frosted or white plastic cover options.





Aluminum Profiles for LED Strip Lights

Rimikon



**RIM-AP2206**

1/4" H x 7/16" W x 78.5" L



**RIM-AP1506**

1/4" H x 7/16" W x 78.5" L



**RIM-AP1616B**

5/8" H x 5/8" W x 78.5" L



**RIM-AP1616**

5/8" H x 5/8" W x 78.5" L



**RIM-AP2406**

1/4" H x 1" W x 78.5" L



**RIM-AP2310**

3/8" H x 3/4" W x 78.5" L



**RIM-AP3030**

1-1/8" H x 1-1/8" W x 78.5" L



**RIM-AP5528**

bull nose x 2.5" W x 78.5" L

**SPECS AND DETAILS:**

- Length is 78.5"
- Comes with four surface mount clips and two end caps
- Additional end caps and mounting clips are sold separately in boxes of 10 each
- Use with Rimikon single color or RGB color strip lights (indoor or outdoor)

**APPLICATIONS:** see page 20





All Rimikon LED lights are flicker free with full dimming control, allowing you to adjust the brightness at any time of day or night. Our lights work well in all temperatures, including during cold winters.

## Fully Dimmable, Extra Low Voltage 24V DC 10W LED Flood Lights

**Applications/Product Description:** Rimikon extra low voltage LED flood lights can be used to accent a wide range of architectural and outdoor landscape features. Use to illuminate building facades, canopies, walkways, landscape features, water features, emergency pathways, parking lots, and building signage.

Drawing only 10W of power to put out 700 lumens of warm white color temperature, Rimikon extra low voltage LED flood lights will go on and stay on for up to 50,000 hours, saving you significantly more energy, operational, and maintenance costs than carbon fluorescent lights (CFLs) and traditional, higher voltage LED lights.



### **RIM-FL24**

#### **SPECS AND DETAILS:**

- Input Voltage: 24V DC
- Output: 24V DC
- Lumens: 700
- Kelvins: 3,000 (warm white)
- Rated power: 10W
- Requires a 24V DC 4A power supply
- Powers up to 6 LED flood lights
- Certified to be used with 14/2 extra low voltage stranded wire
- Certifications: UL/CUL (Class 2), IP65
- Warranty: 1 year

**APPLICATIONS:** see page 22

#### **RELATED PRODUCTS:**

PLN-100-24RIM	24V DC power supply
RIM-IPC	single color controller
RIM-SW12/24	Decora style single and 3-way switch in one
RIM-EXT	extender to double load lights
RIM-TMAD	power supply terminal adapter connector
RIM-MOD	12V DC to 12V DC power distribution module
RIM-FT4-W14/2	14 AWG, 2 conductor stranded wire (500 ft roll)





Zibi installed Rimikon lighting products in its world-class, sustainable waterfront community to demonstrate its commitment to the highest green building standards for materials, energy, and overall sustainability.

## Fully Dimmable, Extra Low Voltage 12V or 24V DC LED Stair/Wall Lights

**Applications/Product Description:** Rimikon extra low voltage LED stair lights are versatile for use indoors or outdoors—whether you want to illuminate the beautiful features of floating stairs, spiral staircases and grand stairways inside your home or create a safe outdoor pathway with beautifully accented stairs to showcase architectural, landscape and water features. Also known as wall lights, you can install them on posts, columns and walls—anywhere you want accent lighting.

Drawing only 3W of power to put out 175 lumens, Rimikon extra low voltage LED stair lights are fully dimmable and versatile for many commercial applications in bars, restaurants, and retail environments. Emits a warm white color temperature.



### RIM-WL12/24



#### **SPECS AND DETAILS:**

- Input Voltage: 12V/24V DC
- Output: 12V/24V DC
- Lumens: 175
- Kelvins: 2,700 (warm white)
- Rated power: 3W
- Requires either a 12V (8A) or 24V (4A) DC power supply
- Powers up to 10 LED stair lights (on a 12V 3A power supply) or 18 LED stair lights (on a 12V 5A power supply)
- Powers up to 24 LED stair lights (on a 24V 4A power supply)
- Trim Color: Silver
- Certified to be used with 14/2 extra low voltage stranded wire
- Certifications: UL/CUL (Class 2), IP65
- Warranty: 1 year

**APPLICATIONS:** see page 24

#### **RELATED PRODUCTS:**

PLN-100-24RIM	24V DC power supply
RIM-PW12.-3.0	12V DC 3A power supply
RIM-PW12.-5.0	12V DC 5A power supply
RIM-IPC	single color controller
RIM-SW12/24	Decora style single and 3-way switch in one
RIM-EXT	extender to double load lights
RIM-TMAD	power supply terminal adapter connector
RIM-MOD	12V DC to 12V DC power distribution module
RIM-FT4-W14/2	14 AWG, 2 conductor stranded wire (500 ft roll)



## Extra Low Voltage 12V or 24V DC LED Power Supplies



### **PLN-100-24RIM** (24V DC power supply)

- Input Voltage: 100V-120V AC
- Output: 24V DC, 4A
- Surface mount
- Certifications: UL/CUL (Class 2)
- Warranty: 1 year



### **RIM-PW-12-3.0** (12V DC 3A power supply)

- Input Voltage: 100V-240V AC
- Output: 12V DC, 3A
- Plug in Type
- Certifications: UL/CUL (Class 2)
- Warranty: 1 year



### **RIM-PW-12-5.0** (12V DC 5A power supply)

- Input Voltage: 100V-240V AC
- Output: 12V DC, 5A
- Plug in Type
- Certifications: UL/CUL (Class 2)
- Warranty: 1 year

**APPLICATIONS:** see page 26



## Extra Low Voltage LED Controls



**RIM-IPC** (12V or 24V single color IP controller)  
**RIM-RGBIPC** (12V or 24V RGB color IP controller)

- Input Voltage: 12V-24V DC, 8A/4A
- Output: 12V-24V DC, 8A/4A
- Control single color LED lights by zone
- Download Rimikon iOS or Andoid app to control through network or Wi-Fi
- Compatible with Control4, Crestron, Remote Technologies Incorporated (RTI) and Universal Remote Control (URC) home automation systems
- Certifications: UL/CUL (Class 2), FCC
- Warranty: 1 year



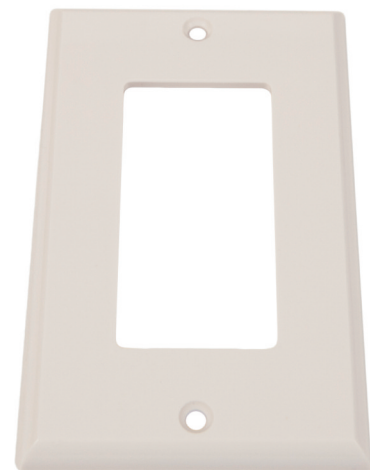
**RIM-LVD2**  
 (12V or 24V DC  
 Decora style dimmer)

- Input Voltage: 12V/24V DC, 8A/4A max
- Output: 12V/24V DC, 8A/4A
- PWM (pulse width modulation)
- 1-Gang Decora style
- Wall mounted
- Requires 14 AWG, 2 conductor stranded wire
- Certifications: UL/CUL (Class 2)
- Warranty: 1 year



**RIM-SW12/24**  
 (12V or 24V DC Decora style  
 single and 3-way switch in one)

- Input Voltage: 12V/24V DC, 8A/4A max
- Output: 12V/24V DC, 8A/4A
- Use with 14 AWG, 2 conductor stranded wire
- Certifications: UL/CUL (Class 2)
- Warranty: 1 year

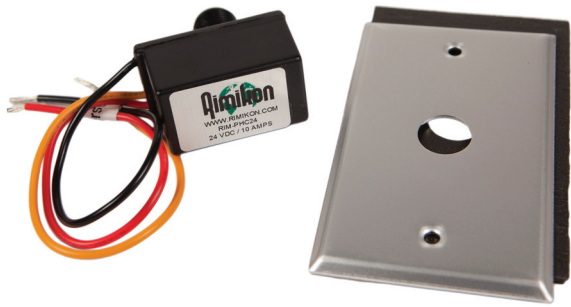


**RIM-1FP**  
 (Decora style single  
 gang faceplate)

- Color: White
- Compatible with Rimikon LVD2 dimmer or the RIM-SW12/24 LED light switch



## Extra Low Voltage LED Controls



### **RIM-PHC24**

(24V photo cell for dusk 'til dawn lighting)

- Input Voltage: 24V DC, 4A
- Output Voltage: 24V DC, 4A
- Recessed and single gang application
- Certifications: UL/CUL (Class 2)
- Warranty: 1 year



### **RIM-RGBC**

(24-key infrared controller for RGB strip lights)

- Input Voltage: 12V DC, 8A
- Output: 12V DC, 8A
- Surface mount
- Warranty: 1 year



### **RIM-ROT-DIM**

(12V rotary dimmer for cabinet and strip LED lights)

- Input Voltage: 12V DC, 5A/3A
- Output Voltage: 12V DC, 5A/3A
- Surface mount
- White or black
- Warranty: 1 year



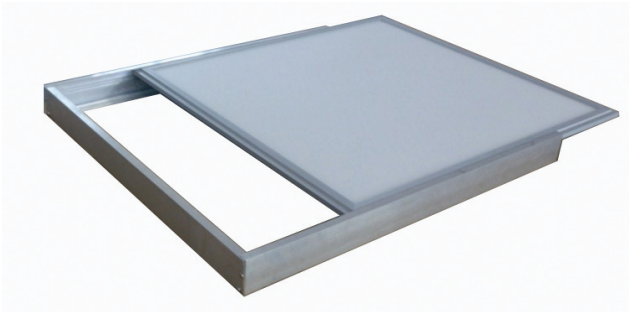
### **RIM-EXT**

(extender to double load lights)

- Input Voltage: 100V to 12V/24V DC, 8A/4A
- Output: 12V/24V DC, 8A/4A
- Use with 12V DC or 24V DC power supplies
- Warranty: 1 year
- Note: It will not exceed Class 2 certification standards during installation



## Extra Low Voltage Hanging LED Panel Accessories



### **RIM-P26SM**

(surface mount frame)

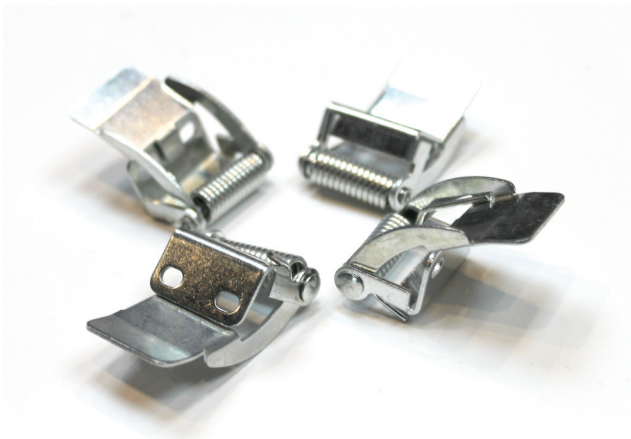
- Slides inside the surface mount frame



### **RIM-P26CSC**

(ceiling suspension kit)

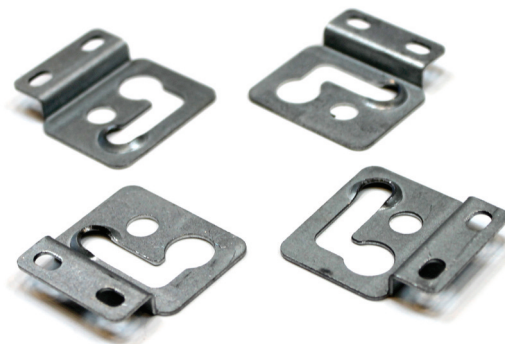
- Hang flat panel with adjustable wires



### **RIM-P26TBC**

(spring clip)

- 4-pack
- Attaches to the back of the panel
- Ideal for drywall ceilings

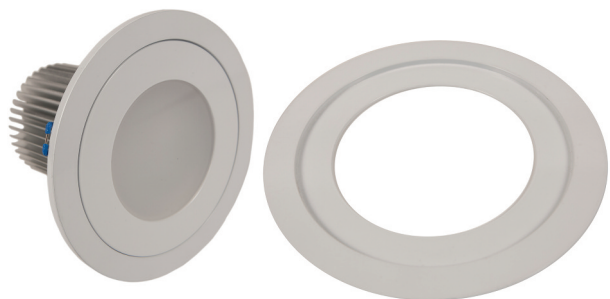


### **RIM-P26CM**

(chain mount bracket)

- Secure the flat panel with chains or wire

## Extra Low Voltage LED Accessories



### **RIM-RF7.5**

(retrofit adapter ring for recessed lights, 7.5" outer diameter)

### **RIM-RF6.25**

(retrofit adapter ring for recessed lights, 6.25" outer diameter)

- Available in white only



### **RIM-PL-RING-DB** (dark brown)

### **RIM-PL-RING-BL** (black)

- This is a special order if dark brown or black are preferred
- Same 4" trim as the standard white color trim on recessed lights
- Material: Aluminum
- Warranty: 1 year



### **RIM-CAB-BRK**

(cabinet bracket)



### **RIM-RI-BRK**

(rough-in bracket for recessed lights)



### **RIM-FT4-W18/2**

(18 AWG, 2 conductor extra low voltage stranded wire, 1,000 ft roll)



### **RIM-FT4-W14/2**

(14 AWG, 2 conductor extra low voltage stranded wire, 500 ft roll)

### **RIM-TMAD**

(female 2.5 mm LED power adapter jack)



## DID YOU KNOW?

Compared to traditional compact fluorescent lights (CFLs), LEDs produce a higher light output per watt, consume less energy, and are used in more applications. They present no shock or burn risks, contain zero toxic mercury or UV radiation, and emit very little EMF pollution. Rimikon lights were designed to be even more efficient than traditional LED lights—up to 15% more efficient—and will last about five times longer than CFLs.



Rimikon



lights  
ON



**Rimikon is an innovative lighting and lighting design company that is passionate about integrating cost-saving, energy-efficient, and environmentally sustainable technologies and solutions into our everyday lives. It was first in line to introduce patent-protected ELV (extra low voltage) LED lighting products, power supplies, controls and accessories to the North American market.**

**For more technical information, please visit:**

**[www.rimikon.com](http://www.rimikon.com)**

